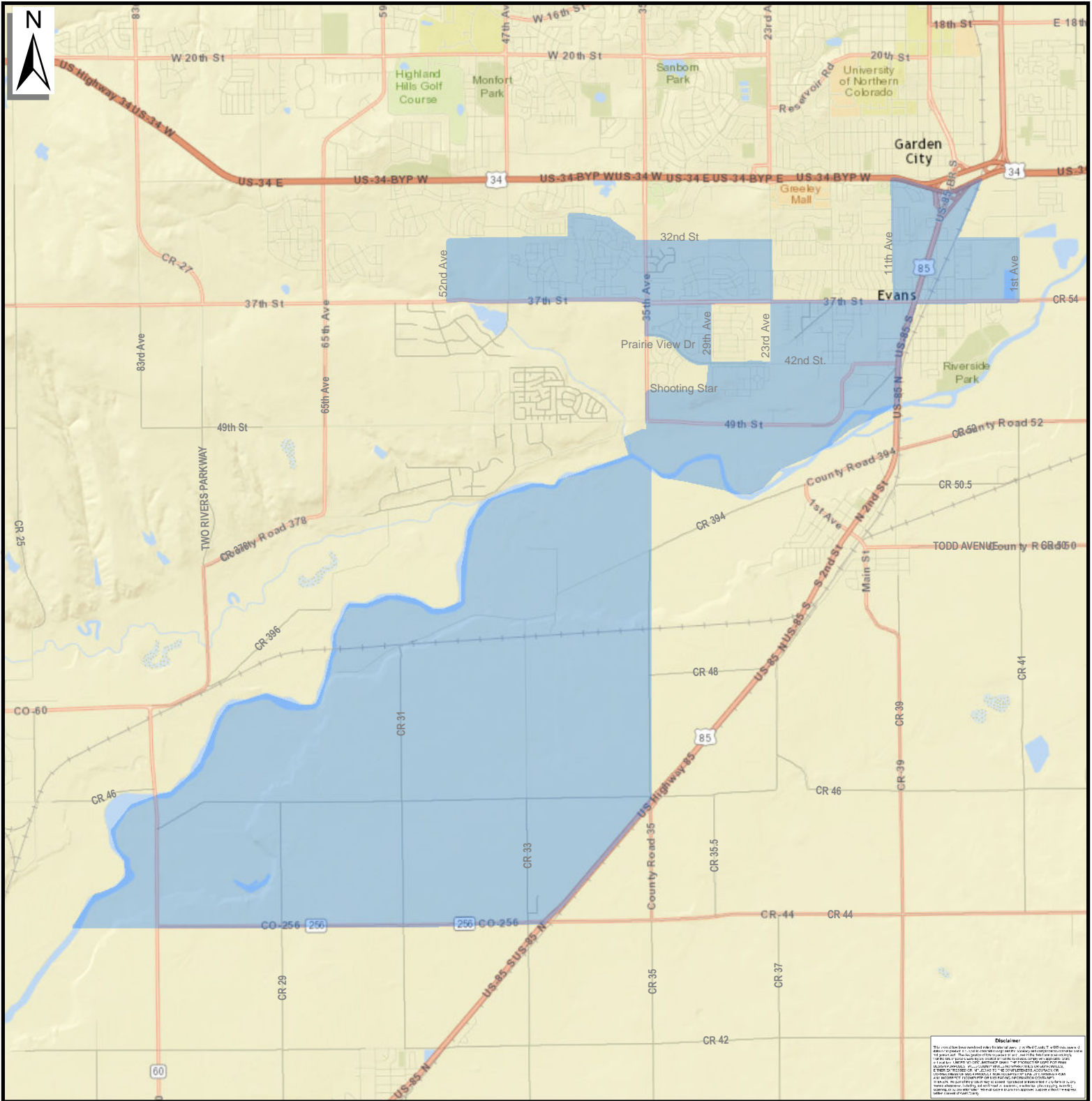
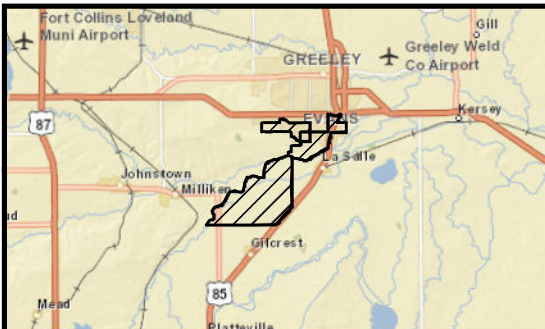


Weld Enterprise Zone - Evans Sub Zone Effective January 1, 2016



Disclaimer
 This map has been prepared for informational purposes only. It is not intended to be used as a legal document. The City of Evans, Colorado, is not responsible for any errors or omissions on this map. The City of Evans, Colorado, is not responsible for any damages or losses resulting from the use of this map. The City of Evans, Colorado, is not responsible for any claims or lawsuits filed against the City of Evans, Colorado, or any of its officials, employees, or agents, in connection with the use of this map. The City of Evans, Colorado, is not responsible for any claims or lawsuits filed against the City of Evans, Colorado, or any of its officials, employees, or agents, in connection with the use of this map.



For program information contact Upstate Colorado Economic Development
 * 970-356-4565 * | www.upstatecolorado.org